



**HOME OFFICE**

PO Box 1605  
5409 Hamlet Drive  
Findlay, Ohio 45840-1605 USA  
inquiries@rowmark.com

**EUROPE OFFICE/WAREHOUSE**

Schaarbeekstraat 44  
9120 Beveren-Waas  
Belgium  
+32 (0)3 870 41 10  
emea@rowmark.com

**TECHNICAL SUPPORT**

877.769.6275 /// 419.425.8974  
techhelp@rowmark.com

**CUSTOM REQUESTS**

800.243.3339 /// 419.425.2407  
customerservice@rowmark.com

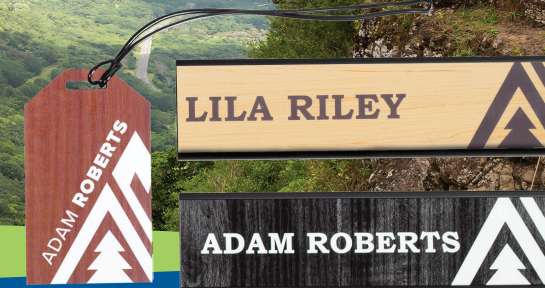
**LATIN AMERICA  
& TECHNICAL SUPPORT**

+55 11 97530-6575 /// latinamerica@rowmark.com

**AUSTRALIA  
& TECHNICAL SUPPORT**

Unit 10/167 Prospect Hwy,  
Seven Hills NSW 2147  
1300 023 370  
sales@rowmark.com.au

877.rowmark / rowmark.com



**The  
Naturals**

Add a touch of nature.



**6 NEW COLORS!**





## Add a touch of nature to your projects with The Naturals by Rowmark. The Naturals product line feature authentic nature-inspired textured patterns infused into the top layer of this engravable sheet product.

The Naturals not only look like they came right from the outdoors, but they feel like they came from the outdoors! And just like their real-life counterparts, The Naturals have a tough exterior finish that will stand up to the elements. Featuring the contemporary look of marble, granite and

wood, The Naturals are laser and rotary engravable and UV-LED printable. They're ideal for all types of signage and display applications, including engraved signage and cut-out letters.

### New Naturals Colors NEW



<b>Tobacco Leather/White</b> TN922-812 1/16" TN942-812 1/8"	<b>Stone Grey Leather/Black</b> TN922-304 1/16" TN942-304 1/8"	<b>Vanilla Leather/Black</b> TN922-854 1/16" TN942-854 1/8"	<b>Midnight Leather/White</b> TN922-402 1/16" TN942-402 1/8"	<b>Whitewash/White</b> TN922-232 1/16" TN942-232 1/8"	<b>Whitewash/Black</b> TN922-234 1/16" TN942-234 1/8"
---	--	---	--	---	---

## Material Specifications

**Material**  
Microsurfaced impact acrylic

**Finish**  
Textured

**Sheet Size**  
24.125" x 49" (613mm x 1245mm)

**Material Thickness**  
1/16" (1.6mm) & 1/8" (3.2mm)

**Engraving Method**  
Laser & Rotary

**Capabilities**  
Bevels, Bonds, Drills, Heat Bendable, Hot Stamps, Laser Vector Cuts, Permits Fine Detail Engraving, Saws, Screen Prints, Shears (*works on thicknesses 1/16" & under*)

**Usage**  
Crafts & Artistry Projects, Exterior Signage, Interior Signage, Ornaments, Personal Identification, Recreational Signage, Trophies, Awards & Plaques

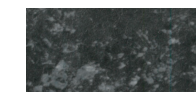
**Features**  
Trending wood, marble & granite patterns, easy-to-fabricate plastic acrylic material

To Order 1/16"  
Use TN922

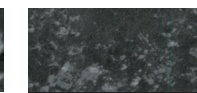
To Order 1/8"  
Use TN942

## Products & SKUs

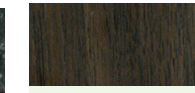
 <b>Burnt Sienna/Ash</b> TN9X2-822	 <b>Burnt Sienna/Beige</b> TN9X2-828	 <b>Aspen Grey/Light Grey</b> TN9X2-323	 <b>Aspen Grey/Black</b> TN9X2-324	 <b>Black Galaxy/White</b> TN9X2-412	 <b>Black Galaxy/Black</b> TN9X2-414	 <b>Beechwood/Ivory</b> TN9X2-134	 <b>Beechwood/Brown</b> TN9X2-138	 <b>Tobacco Leather/White</b> TN9X2-812	 <b>Stone Grey Leather/Black</b> TN9X2-304
 <b>Celestial Grey/White</b> TN9X2-312	 <b>Celestial Grey/Grey</b> TN9X2-313	 <b>Solarius Stone/Parchment</b> TN9X2-818	 <b>Solarius Stone/Black</b> TN9X2-814	 <b>Luna White/White</b> TN9X2-212	 <b>Luna Pearl/Black</b> TN9X2-214	 <b>Vanilla Leather/Black</b> TN9X2-854	 <b>Midnight Leather/White</b> TN9X2-402	 <b>Whitewash/White</b> TN9X2-232	 <b>Whitewash/Black</b> TN9X2-234



**Mojave Black/White**  
TN9X2-422



**Mojave Black/Black**  
TN9X2-424



**Natural Teak/Ash**  
TN9X2-172



**Natural Teak/Brown**  
TN9X2-178



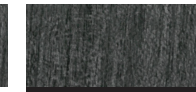
**Brazilian Cherry/Ash**  
TN9X2-022



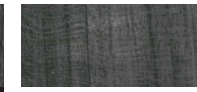
**Brazilian Cherry/Copper**  
TN9X2-028



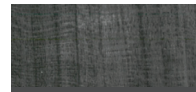
**Carbon Ash/White**  
TN9X2-192



**Carbon Ash/Black**  
TN9X2-194



**Barnwood Grey/White**  
TN9X2-162



**Barnwood Grey/Charcoal**  
TN9X2-168