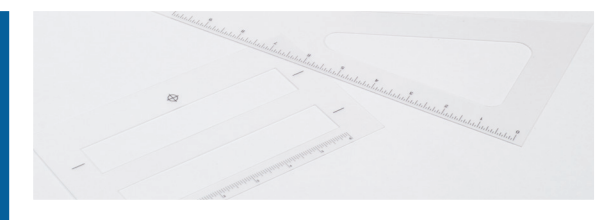
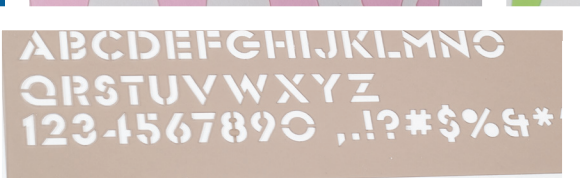


# Applications



## HOME OFFICE

PO Box 1605  
5409 Hamlet Drive  
Findlay, Ohio 45840-1605 USA  
inquiries@rowmark.com

## EUROPE OFFICE/WAREHOUSE

Schaarbeekstraat 44  
9120 Beveren-Waas  
Belgium  
+32 (0)3 870 41 10  
emea@rowmark.com

## TECHNICAL SUPPORT

877.769.6275 // 419.425.8974  
techhelp@rowmark.com

## CUSTOM REQUESTS

800.243.3339 // 419.425.2407  
customerservice@rowmark.com

## LATIN AMERICA & TECHNICAL SUPPORT

+55 11 97530-6575 // latinamerica@rowmark.com

## AUSTRALIA & TECHNICAL SUPPORT

Unit 10/167 Prospect Hwy,  
Seven Hills NSW 2147  
1300 023 370  
sales@rowmark.com.au

877.rowmark / rowmark.com

Perfect for custom stencil  
& template creation.

# Introducing

Lucent, a versatile, easy-to use sheet material ideal for creating custom stencils and templates as well as educational and promotional tools. The opportunities for this product are unlimited, just add your creativity and imagination.

Lucent is the smart choice for crafters, educators and professionals looking for a sheet material to fabricate custom stencils, tracing templates, patterns or scrapbooking tools. This material can be used with a variety of acrylic paints that are spray or brush-on and can be used for material for traffic and pavement-marking stencils.

This single-ply product is available in a durable matte finish in .025" thickness, and features exceptional durability and integrity for applications that require a tough product.

Available in translucent clear and six translucent colors to meet your needs, Lucent laser cuts easily to create a clean, smooth finished edge. Add a splash of color or personalization with screen, pad or UV-LED printing to create the ultimate finished product.

## Material Specifications

### Material

Translucent, single-ply modified acrylic

### Finish

Matte non-glare (*One Side*)

### Sheet Size

24.0625" x 49" (*300mm x 610mm*)

### Material Thickness

.025" (*0.64mm*)

### Fabrication Type

Drills, Laser Vector Cuts, Saws, Screen Prints, Shears (*Works on thicknesses 1/16" & under*)

### Usage

Craft & Artistry Projects, Engineering Templates, Exterior Signage, Interior Signage, Stencils

### Primary Application

Ideal for Engineering Templates, Lettering or Tracing Stencils, Rulers & Other Personalized Promotional Giveaways, Painting Stencils, Patterns, Scrapbooking & Educational Aids

*Masked on both sides for handling purposes.  
Rowmark branded masking is applied to the backside and a clear mask on matted surface side to protect the sheet during shipping and handling.*

## Products & SKU's



**LC342-025**  
Translucent Smoke



**LC999-025**  
Translucent Green



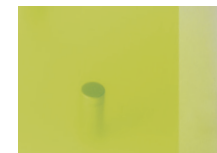
**LC599-025**  
Translucent Blue



**LC679-025**  
Translucent Pink



**LC669-025**  
Translucent Orange



**LC729-025**  
Translucent Yellow



**LC101-025**  
Translucent Clear

# Sample Product

