

# DIRECTORY



Classrooms 112-128 →

Classrooms 224-236 ↑

Elevator →

405 rooms ↑

STUDY ROOM

**KATHY JOHNSON**  
Marketing and Communications



### HOME OFFICE

PO Box 1605  
5409 Hamlet Drive  
Findlay, Ohio 45840-1605 USA  
inquiries@rowmark.com

### TECHNICAL SUPPORT

877.769.6275 /// 419.425.8974  
techhelp@rowmark.com

### LATIN AMERICA & TECHNICAL SUPPORT

+55 11 97530-6575 /// latinamerica@rowmark.com

### EUROPE OFFICE/WAREHOUSE

Schaarbeekstraat 44  
9120 Beveren-Waas  
Belgium  
+32 (0)3 870 41 10  
emea@rowmark.com

### CUSTOM REQUESTS

800.243.3339 /// 419.425.2407  
customerservice@rowmark.com

### AUSTRALIA & TECHNICAL SUPPORT

Unit 10/167 Prospect Hwy,  
Seven Hills NSW 2147  
1300 023 370  
sales@rowmark.com.au

877.rowmark / rowmark.com



## LASERMAX® REVERSE LIGHT BLOCKERS

Engineered for improved back-painting and back-lighting performance.



Simply Rowmarkable since 1987

**Create striking, crisp images with the all-new LaserMax® Reverse Light Blockers. This product is perfect for applications that require images to be protected subsurface, allowing for a smooth top surface that can be easily cleaned.**

LaserMax® Reverse Light Blockers are engineered to have a transparent clear acrylic over a rich layer of color or brilliant metallic pattern. Simply mirror artwork and engrave the product from the backside. The color layer will remove during the engraving process to expose the clear layer. Next customize the material by using lighting or an acrylic paint of your choice to color-fill the back layer. The “light blocker” layer is specially designed to hide imperfections and overpainting in the back-filled area.

This product line is a perfect choice when looking for a custom color combination. Use the standard range of colors and your choice of acrylic paint to meet custom needs. This versatile product line can also be used as an ADA compliant sign-making substrate and is UV-LED print receptive.



## Material Specifications

### Material

Microsurfaced impact acrylic for reverse engraving

### Finish

Matte non-glare  
Gloss available upon request

### Sheet Size

24-1/8" x 48-3/4" (613mm x 1238mm)

### Engraving Depth

.003" (.08mm)

### Capabilities

Back-lighting, Bevels, Bonds, Drills, Heat Bendable, Hot Stamps, Laser Vector Cuts, Permits Fine Detail Engraving, Saw, Screen Prints, Shears (*works on thicknesses 1/16" & under*)

### Usage

ADA Compliant/Tactile Signs, Control Panels, Exterior Signage, Interior Signage, Illuminated Wayfinding, Personal Identification, Safety Signage

# Product Samples



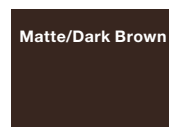
## LaserMax® Reverse Light Blockers



LM922-341



LM922-401



LM922-841



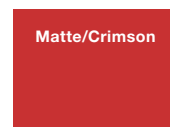
LM922-201



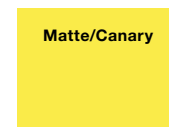
LM922-301



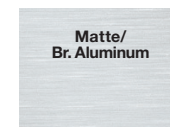
LM922-511



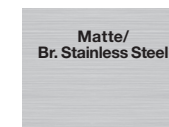
LM922-601



LM922-701



LM922-351



LM922-361



LM922-881



LM922-861



LM922-761